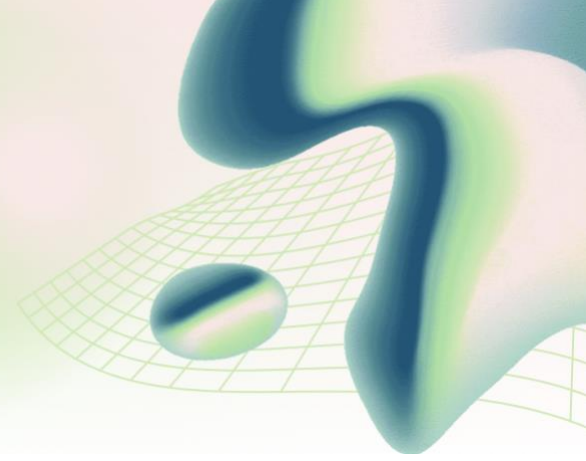


EXTRA-CURRICULAR ACTIVITIES ACCREDITATION

GOER standard review template



Range of Activities

Criteria:

- ☐ A diverse range of activities are offered, catering to various student interests and skills.
- ☐ Activities span academic, cultural, sporting, and recreational domains.
- ☐ New activities are introduced regularly based on student feedback and emerging trends.
- ☐ Activity schedules are well-publicized and easily accessible to students.
- ☐ Resources (facilities, equipment, funding) are allocated appropriately to support activities.

Significant Comments:

Range of Activities - Summary

Grading:

- ☐ Fully Complies
- ☐ Partially Complies
- ☐ Falls Below the GOER Standard

Overall Significant Comments:

Participation and Inclusion

Criteria:

- ☐ Participation rates are high across different student demographics.
- ☐ Efforts are made to actively include students from under-represented groups.
- ☐ Financial assistance or subsidies are available to ensure equitable access.
- ☐ Activities are scheduled at times that accommodate diverse student schedules.
- ☐ The school promotes a culture of inclusivity and respect within extra-curricular activities.

Significant Comments:

Participation and Inclusion - Summary

Grading:

- ☐ Fully Complies
- ☐ Partially Complies
- ☐ Falls Below the GOER Standard

Significant Comments:

Quality of Supervision

Criteria:

- ☐ Qualified and trained supervisors are assigned to each activity.
- ☐ Supervisors provide adequate guidance, support, and mentorship to students.
- ☐ Risk assessments are conducted, and safety protocols are in place for all activities.
- ☐ Supervisor-to-student ratios are appropriate to ensure student safety and well-being.
- ☐ Supervisors receive ongoing professional development related to extra-curricular activity management.

Significant Comments:

Quality of Supervision - Summary

Grading:

- ☐ Fully Complies
- ☐ Partially Complies
- ☐ Falls Below the GOER Standard

Overall Significant Comments:

Student Leadership Opportunities

Criteria:

- ☐ Activities provide opportunities for students to develop leadership skills.
- ☐ Students are actively involved in planning, organizing, and leading activities.
- ☐ Leadership roles are accessible to a diverse range of students.

- ☐ Training and support are provided to student leaders.
- ☐ The school recognizes and celebrates student leadership contributions.

Significant Comments:

Student Leadership Opportunities - Summary

Grading:

- ☐ Fully Complies
- ☐ Partially Complies
- ☐ Falls Below the GOER Standard

Overall Significant Comments:

Community Involvement

Criteria:

- ☐ Activities promote student engagement with the local community.
- ☐ Students participate in service-learning projects and volunteer opportunities.
- ☐ Partnerships are established with community organizations to enhance activities.
- ☐ Activities address community needs and contribute to positive social change.
- ☐ The school recognizes and celebrates student contributions to the community.

Significant Comments:

Community Involvement - Summary

Grading:

- ☐ Fully Complies
- ☐ Partially Complies
- ☐ Falls Below the GOER Standard

Overall Significant Comments:

Monitoring and Evaluation

Criteria:

- ☐ Regular monitoring and evaluation of activities are conducted.
- ☐ Student feedback is collected and used to improve activities.
- ☐ Data on participation rates, student outcomes, and community impact are tracked.
- ☐ Evaluation findings are used to inform future planning and resource allocation.
- ☐ The school demonstrates a commitment to continuous improvement of its extra-curricular program.

Significant Comments:

Monitoring and Evaluation - Summary

Grading:

- ☐ Fully Complies
- ☐ Partially Complies
- ☐ Falls Below the GOER Standard

Overall Significant Comments:

Summary

This document provides a comprehensive template for GOER accreditation panellists to evaluate the 'Extra-Curricular Activities' standard. It includes detailed criteria for each sub-standard, interactive checkboxes, and editable comment boxes to facilitate a thorough and consistent assessment.